
THE GAUNTLET

THE LOCAL MAGAZINE FOR THE SOMBORNES
AND ASHLEY

DECEMBER 2023
JANUARY 2024

Remembrance services

All ages represented

PAGES 4 and 5

Also in this edition:

Working Men's Club to close

Important meeting for all
members

PAGE 7

Christmas preparations continue

PAGES 7, 10, 11, 12, 13, 20,
36 and 37

Warm Hub cinema again

More entertainment this winter
PAGE 19

New year fun

Lots to look forward to
PAGES 14, 15, 21, 30 and 31



PUBLISHED BY THE CHURCH IN THE SERVICE OF THE PARISH
DELIVERED FREE TO THE RESIDENTS OF THE SOMBORNES AND ASHLEY
POSTED TO ANYWHERE ELSE IN THE UNITED KINGDOM FOR £12 PER YEAR



STOCKBRIDGE

OSTEOPATHIC PRACTICE

Osteopathy and Cranial Osteopathy

Emma Wightman and associate
osteopaths.

A gentle, hands on approach for
newborns through to adulthood
and in pregnancy.

Also

- Massage & Reflexology
- Pilates, 1 to 1 and small group
- Homeopathy
- Nutrition
- Counselling and hypnotherapy

Osteopathy and Massage via our website

Tel: 01264 810028

www.the-SOP.com reception@the-SOP.com

STOCKBRIDGE OSTEOPATHIC PRACTICE - HIGH STREET, STOCKBRIDGE, SO20 6HF

Down to Earth Garden Machinery

Phone: 01794 367047

Email: les@dtgcm.co.uk



MITOX

COBRA

AL-KO

DANARM



TORO



Lester Smith

Your Local Specialist
with over 40 years experience

For:

- | | |
|------------------------------|--|
| ➤ Servicing & Mobile Repairs | ➤ Keen Prices On New and Used Machines |
| ➤ Spare Parts | ➤ Garden Machinery Hire |
| ➤ Oils & Batteries | ➤ Impartial Advice Given Freely |
| ➤ Hand Tools Sharpened | |

www.dtgcm.co.uk

Eldon Road, Braishfield, Romsey, Hampshire. SO51 0PT

**Barker
& Geary**
LIMITED



Fencing and Gate Centre

Maker & installers of fine gates & fencing for over 60 years

A family run business since 1945

Suppliers of all your fencing and gate needs.
Closeboard | Panels | Concrete | Post & rail |
Metpost | Electric Fencing | Ironmongery
Trade and Public



AUTOMATED GATES

**Installers of Automated gates, from design
to install, all work undertaken in house**

- * Factory trained installers**
- * Bespoke wood or metal gates**
- * Fully qualified in house electricians**
- * Servicing**



Romsey Road, Kings Somborne. SO20 6PW
01794 388205

www.barkerandgeary.co.uk
info@barkerandgeary.co.uk

Mulberry Tree Services

Problem Trees?

Fully Qualified Certified Tree
Surgeon with 25 years experience

Fully Insured Very Competitive Prices

- Removal of Dangerous Trees
- Pruning • Shaping • Thinning
- Stump Removal • Hedge Cutting
- Fencing Specialist

Tel: 01962 88 68 66

Mob: 07974 761183

www.mulberrytreeservices.co.uk

STOCKBRIDGE CHIROPODY

FIONA ROBINSON
DipodM MSRCh Bsc(Hons)

Health Professions Council
Registered
Chiropodist/Podiatrist

Clinic Appointments
available

01264 810739

STOCKBRIDGE CHIROPODY

HOW PARK TRADING ESTATE

TO LET

Cow Drove Hill, King's Somborne, Stockbridge, SO20 6QG

- Secure, surfaced open storage and transport yards
- From 0.28 to 4.15 acres (0.70 to 1.68 ha)
- Discreet hard surfaced compounds
- Steel frame workshop storage building approx. 3,000 sf (280m²)
- 4 no. single storey commercial 'lock-up' units from 332 to 670 sf (30.84 to 62.24m²) suitable for storage/workshops, office, gym, creche or consulting rooms

Ample on-site parking

Further details from: info@frobisherltd.com

Tel: 01794 388547

THE CROWN INN

Home-cooked Food served daily

Tues – Sat 12 – 2.00pm & 5.30 – 9pm

Sunday Roast from 12 noon



Real Ales, Premium Lagers and Ciders

Comprehensive Wine List

Take-aways 5.30–6.30pm Tues-Sat



Dog Friendly (Dog's Sunday lunch available!)

Pretty Pub Garden for Al Fresco Dining

Cosy Bar with inglenook fireplace

Charity Quiz and Curry Night – 1st Tue of month

Custom & Vintage Bike Night – Weds in summer

Catering for functions a speciality

Closed on Mondays during winter, except Bank Holidays



www.thecrownks.co.uk

01794 388360

Romsey Road,
Kings Somborne,
SO20 6PW



Stretch and Tone at Carolyn's **IYENGAR YOGA CLASSES**

King's Somborne Village Hall

(Tues pm & Thurs am)

Awbridge Village Hall (Weds am)

Romsey (Thurs pm)

Studio Yoga, Houghton (Fri am)



Carolyn Ryan 01794 388743 ryan_carolyn@hotmail.com

Richard Penfold **Local Firewood Supplier**

High quality seasoned logs produced by ourselves from locally sourced timber cut from well managed and sustainable woodlands. Dry stored, delivered dry and available throughout the year.

Telephone: 01794 389603 Mobile: 079000 61158

Email: richard@woodlandfirewood.co.uk

www.woodlandfirewood.co.uk

the
salisburypractice
stockbridge

- Clinical Psychologists
- CBT Therapists
- Psychiatrist

Here to support you to feel better...

Face to face appointments in our **Stockbridge** or **Salisbury** offices (or online if requested), each focussed on finding ways to relieve a wide range of psychological distress and to improve a sense of emotional well-being.

Three senior, very experienced Practitioners (for individuals over 18) have joined our existing team and can offer swift appointments.

Contact our friendly admin team for information on:

☎ 01264 811660 or stockbridge@thesalisburypractice.co.uk

If you'd like to talk with a member of the clinical team about your wishes, please feel free to request a telephone appointment with Dr. Steve Holmes, (Clinical Psychologist & Director).



OPEN WEDNESDAY, THURSDAY, FRIDAY 10AM - 3PM

www.theofficersmessinteriors.co.uk
Unit 12a Stonefield Park Martins Lane Chilbolton Hampshire SO20 6BL

curtains • blinds • headboards • valances • wallpapers • carpets
cushions • fabrics • upholstery • bed covers

• COLEFAX & FOWLER • MANUEL CANOVAS • LINWOOD • ROMO • LEWIS & WOOD • KATE FORMAN •
• DESIGNERS GUILD • SANDERSON • IAN MANKIN • TITLEY & MARR • BARNEBY GATES • CHARLOTTE GAISFORD •
• GP & J BAKER • JANE CHURCHILL • ANDREW MARTIN • CLARKE & CLARKE • CHRISTOPHER FARR •



**Established friendly and professional Heating Services company
supporting your oil, gas & LPG needs.**

- ◆ Highly efficient heating solutions designed and installed.
- ◆ Bespoke swimming pool heating solutions provided, with smart controls.
- ◆ Underfloor heating designed, installation and repair.
- ◆ We also offer emergency breakdown, repairs, servicing & certification.

All work undertaken to the highest standards of care and diligence.

Call 01722 417873 or email sales@ahs-heating.co.uk



www.ahs-heating.co.uk



**KING'S SOMBORNE
TREE CARE**

07944 833726
CALL FOR A FREE NO OBLIGATION QUOTE

- **TREE FELLING & REMOVAL**
- **CROWN PRUNING**
- **DEAD WOODING**
- **HEDGE WORK**
- **TPO & PLANNING APPLICATIONS**
- **SITE CLEARANCE**
- **EMERGENCY CALL OUTS**
- **FULLY QUALIFIED AND INSURED**

KINGSSOMBORNETREECARE@OUTLOOK.COM
WWW.KINGSSOMBORNETREECARE.CO.UK

C&S Mechanical Services

- Service & Commissioning Of All Heating Systems; Oil, Gas & LPG
- Installations of Oil Tanks, Heating Systems, Both Commercial & Domestic
- Unvented & Vented Hot Water Systems, Radiator Changes, Power Flushes, Solar Energy Approved
- No Obligation Free Quotation on request
- £2 Million Liability Insurance.
- All Work Guaranteed
- No Job Too Small, No Job Too Big



CALL PAUL ON 07886 361791
OR EMMA ON 07920 289341



To advertise here
Contact our advertising manager, Sue Byram

01794 388521 subyram@aol.com

(The cost to cover the next 4 editions—February through May—would be £36)



The Somborne & District Society

Talks on **Local History** and related subjects.

Visits to places of interest - Quarterly Newsletter

Visitors always welcome!

Regular meetings held on the

4th Wednesday of each month - 8.00pm, in King's Somborne Village Hall

Refreshments from 7.30 pm

Contact : Linda Aucock 01794 388542

Over 125 years of eyecare



01264 312654

stockbridge@rawlingsopticians.co.uk

Opening hours: Tuesday – Friday 9.00am – 5.30pm
Saturday 9.00am – 4.00pm Monday - closed

With our personal service and family heritage, our highly skilled and knowledgeable staff are passionate about providing the best possible eyecare experience for all our customers.

- Eye Examinations
- Spectacles
- Hearing Assessments
- Wax Removal
- Contact Lenses
- Advanced Eyecare Technology & Services
- Proudly Independent
- Generations of Trust



Rethinking Wealth Management

Delivering quality professional advice and a high level of service, based on trust and client understanding.

Our highly qualified advisers have a wealth of experience and knowledge and are able to advise on the most complex of financial planning matters.

Services include

Investment Management
Financial Protection

Financial Advice
Inheritance Tax Mitigation

Pension Planning
Financial Planning



website: www.ocaris.co.uk
phone: +44 (0) 330 1 797 777
email: hello@ocaris.co.uk
location: Southampton

Get in touch
with the Ocaris
Team

Home Appliance SALES & INSTALLATIONS

Offering fast & efficient domestic appliance
delivery service throughout Hampshire &
Surrounding counties

**We can install Freestanding & Built in Laundry,
Refrigeration, Dishwashers, Cookers, Ovens and more.**

**We are also home to Andover's largest Appliance Showroom.
With 100's of models in stock from the biggest brands.**



 **euronics**
the home of electricals

Call us now on
01264 367708



walworth
appliance
centre

Or find us at
Centurion House, Central Way,
Walworth Business Park,
Andover, Hants SP10 5AN

walworthappliances.co.uk  walworthappliances



Hire the **Village Hall** for your Event

Located in a quiet leafy setting in the heart of the Test Valley adjacent to the recreation ground with excellent sporting and leisure facilities

Our modern rooms, new audio visual system and fully equipped commercial kitchen provide the perfect venue for **parties, receptions, meetings and company events**

With several flexible rooms available we can host events from small gatherings to receptions for up to 120 people

To find out more, check room availability or **make a booking** directly visit

www.kingssombornevillagehall.co.uk

or contact

Sarah Pennington (email please)

bookingsksvh@gmail.com

01794 389354 (evenings)

CROSS STORES AND POST OFFICE

News agent

National Lottery

Off licence

Shop: 01794 336555

7.30-6.00 Monday-Friday

8.00-5.00 Saturday

9.00-1.00 Sunday

Post Office: 01794 388341

9.00-5.30 Monday-Friday

9.00-12.30 Saturday



We are a family owned traditional Post Office, Newsagents, off licence, and convenience store. We stock fresh bread, milk, fruit and vegetables, frozen foods, stationery and gifts, winter fuels and BBQ fuels, a bit of almost everything really!

See our Facebook page for local news and events:

www.facebook.com/crossstoresltd



High Quality

Prompt

Private Care

Winchester GP

Prompt appointments

Face to Face, Video or Phone Consultations

Wellness Screening

Specialist Menopause Service

Pay as You Go & Subscription Options

Use alongside your NHS GP

01962 776010

WinchesterGP.com

Winchester & Chandler's Ford

Useful names and numbers

Parish Church

Associate Priest:

Rev Anne Newport 01794 651616
/07807 827781
eanewport166@gmail.com (Thurs. Fri. Sun)

Licensed Lay Ministers:

Howard Rowe 01794 388400
Sabine Burningham 01794 765273

Wardens:

Joan Appleyard 01794 388224
joanappleyard@aol.co.uk
Janet Ingleson 01794 388618
janetingleson@gmail.com

PCC Secretary:

David Pye 01794 388405

Treasurer & Gift Aid Sec:

Claire Bevan 01794 341923

Flowers: Pollyann Monk 01794 388482

Methodist Church

Minister: Revd Peter Rayson 02381 780560

Stewards: Marilyn Bolton 01794 389356

Marion Downing 01794 388121

Roman Catholic Churches

Hampshire Downs parish 01962 852804

St Swithun Wells parish 02380 273882

Village Hall

Bookings: Sarah Pennington 01794 389354
(tel. after 7.30pm please) or email
vhbookings@thesombornes.org.uk

Epworth Hall

Bookings: Marion Downing 01794388121
marion.downing@yahoo.co.uk

Doctors

Stockbridge surgery 01264 810524

www.stockbridgesurgery.co.uk

Broughton surgery 01794 301210

Pharmacy

Stockbridge Pharmacy 01264 810624

Schools

Somborne Pre-School 07530 893773

King's Somborne School 01794 388381

Test Valley School 01264 810555

Police

Action Fraud 0300 123 2040

www.actionfraud.police.uk

Crimestoppers 0800 555 111

Police non-emergency 101

www.hampshire.police.uk

Police emergency 999

Parish Council

Graham Searle

clerk@kingssomborne-pc.gov.uk

Borough Councillors

Stewart MacDonald 07803 594872

Ian Jeffrey 01794 388872

Alison Johnston 01794 500610

County Councillor

David Drew 01264 357024

Member of Parliament

Caroline Nokes MP 020 7219 1468

caroline.nokes.mp@parliament.uk

Local Authority

Test Valley B C 01264 368000

Village Website

www.thesombornes.org.uk

The Gauntlet

Editor: Harvey Saunders 01794 388029

Advertising: Sue Byram 01794 388521

Distribution: Carolyn Ryan 01794 388743

Please deliver articles for *The Gauntlet*
to **thegauntletmag@hotmail.com**
or The Post Office.

**Copy date is no later than 5.00pm on
the 15th of the month please.**

See our colour online edition
at the village website (see above)

Village Directory

Allotments

Contact: Susie Upfield 01794 388198

Badminton Club

Monday evenings in the Village Hall

Contact: Sue Jackson 01794 388884

Bellringing

Every Monday 7.30pm - 9.00pm.

Contact: Clare Thomson 01794 388268

Catherine Edwards Trust

Provides grants to village students

Contact: David Bevan 07769 682696

Computer Café

First and third Tuesday every month 10.00am - 12.00 at the Village Hall. Hands-on support and advice for all ages and experience on using internet, email etc.

Contact: Ian Bradley 01794 388386

Cricket Club

Contact: Rachel King 07809 289861

Christians Together Home Group

Bible study group. Usually third Friday of the month at 10.30am. All welcome.

Contact: Barbara Heffer 01794 389126

Community Responders

Contact: Sarah Seymour 0783 3300504

Dial-a-Ride

Trips to Romsey every Wednesday, for senior citizens and disabled people, at 2.00pm. Fare £3.75.

Contact: 01264 356808

Drop In Coffee Morning

Coffee morning at the Epworth Hall. Every Tuesday (except the second in the month) at 10.30am.

Contact: Marion Downing 01794 388121

Epworth Lunch

Lunch for over 50s at the Epworth Hall. On the second Tuesday in the month at 12.30pm.

Contact: Marilyn Bolton 01794 389356

Friends of King's Somborne Church

Contact: Sandie Pepperell 01794 388021

Football Club

Contact: Andy Gannaway 01794 388733

Footpath walk

Monthly walk on Parish footpaths on the last Sunday of each month. Check the Village Diary or village website for details.

Contact: Duncan Gould 01794 388049

Garden waste scheme

Garden waste will be collected in w/c 11th December and 8th and 22nd January 2024.

Household waste

Non-recyclable household waste (black bins) will be collected in w/c 11th and on 23rd* December and in w/c 8th and 22nd January 2024.

Recyclable household waste (brown bins) will be collected in w/c 4th and 18th December and 1st*, 15th and 29th January 2024.

* See page 44 for details.

Julian Contemplative Prayer Group

Meetings for people from any denomination who are seeking a place for silent prayer and contemplation

Contact: Jane Duncan 01794 388059
janeduncan329@gmail.com

Messy Church

Meets 3rd Sunday of each month in term time, 3.00pm - 5.00pm at the Methodist Church.

Contacts: Sam Barnes 07742 077114
messychurch@gmail.com

Neighbourcare

Transport to essential appointments.

Contacts: Sue Jackson, Mary Bradley
07470022396

Parent, Baby & Toddler Group

Informal friendly get-together for babies, pre-school children, parents and carers. Every Wednesday 9.30am - 11.15am in the Village Hall.

Contacts: Kate Johnson 07831 123893
ksparentandtoddlergroup@gmail.com

Village Directory (continued)

Prayer Group

Contact: Dulcie Witts 01794 388267

School Association (PTA)

Social and fund-raising events to benefit the school and its pupils.

Contact: Alex Hodge 07904 005570
kssa.contact@gmail.com

Scouts

Beavers Mondays 6.00pm
Scouts Wednesdays 7.00pm
Cubs Thursdays 6.00pm

Contact: Michelle MacBean 01794 389152

Services for the over 50's

Contacts: Sue Jackson 01794 388884
suejackson884@icloud.com
Gill Butler 01794 388831
gill_butler@outlook.com

Short Mat Bowls Club

Meet alternate Tuesday afternoons in the Village Hall.

Chair: Julia Bowen 01794 389631
Julia.Bowen@landsker.net

Somborne Café

Every Tuesday 10.00am—1.00pm in the Village Hall

Contact: Alistair Dodds 07831727271
sombornecafe@gmail.com

Somborne Community Cinema

Second Thursday of each month

Contact: Roger Stephens 07483 211834
hello@sombornecommunitycinema.co.uk

Somborne & District Society

Meetings held on the fourth Wednesday of each month at 8.00pm, usually in the Village Hall.

Contact: Linda Aucock 01794 388542

Somborne Garden Club

Meets as advertised for talks and visits, for all garden lovers.

Secretary: Nickey Buckley 01794 388694
nm.buckley@yahoo.co.uk

Somborne Needleworkers

Meet each Thursday at 2pm at the Parish Church.

Contact: Eileen Humphries 01794 388427

Somborne Players

Amateur Dramatics Society. For both children and adults.

Contact: Rebecca Rickard 07748 189864
rebeccarickard65@gmail.com

Sombornes Pre-School

Early Years education for children aged from 2 to school age.

Contact: Rebecca Hunt 07530 893773

Somborne Sessions

Details: www.sombornesessions.co.uk

Contact: Trevor Ryan 01794 388743
info@sombornesessions.co.uk

Somborne Singers

Weekly meetings to sing ballads, songs from shows etc. every Tuesday at 7.45pm in the Parish Church.

Contact: Howard Rowe 01794 388400

Somborne Sisterhood W I

Meets on the first Friday of each month at 8.00pm in the Village Hall

Contact: Natalie
sombornesisterhood@gmail.com

Wednesday Wanderers

Walk on the third Wednesday morning of each month

Contact: Margaret Heffer 01794 389126
heffers@btinternet.com

Women's Fellowship

Meets on the fourth Wednesday of each month at 2.30pm in the Epworth Hall.

Contacts: Marion Downing 01794 388121
Marilyn Bolton 01794 389356

Women's Institute

Meets on the second Wednesday of each month at 7.30pm in the Village Hall.

Contact: Linda Aucock 01794 388542

Working Men's Club

Various entertainments.

Contacts: Trina Masham 07852 257596
Carol Black 07847 528661

Remembrance 2023



After days of wind and rain, the weather remained dry as the children and their teachers from King's Somborne Church of England Primary School joined family and members of

the whole school in the singing of 'This Remembrance Day' by Naomi Johnson. Further prayers were said by the children from the school, who had spent time writing the very moving and emotional words themselves.



On **Armistice Day, Saturday 11th November**, villagers gathered at the War Memorial and prayers were led by Revd Anne. At 11 o'clock the Nation's Two Minute Silence was observed and David Pepperell laid a wreath on behalf of the District

the community at the short service held at the War Memorial on **Friday 10th November**.

Opening prayers were led by Revd Anne Newport, and the Exhortation delivered by Darren Andrews (late Grenadier Guards). The Two Minutes Silence was followed by the laying of a wreath on behalf of the School by the oldest and youngest pupils. Katie Smith, Class Teacher and SENCo, led

Volunteer Poppy collectors.

Remembrance Sunday fell on the 12th November this year. A group of Scouts and Beavers were present and were joined by representatives of the Parish Council and Village Organisation. The service was led by the Revd Anne Newport and assisted by the Circuit Methodist Minister, Revd Peter Rayson, with Howard Rowe providing sound and Sabine Burningham on the piano. WO2 Gareth Williamson RLC read out the names of those lost followed by the Exhortation. Sam Waters moved everyone by his trumpet solo rendition of 'The Last Post' and 'Reveille'. Wreaths were placed by representatives of the various organisations together with many family and personal mementos in memory of those who have died through all conflicts.

A collection for the RBL was held during the final hymn. At the





conclusion of this service, Revd Anne invited all those present to join in the following United Service inside the Church. During this, prayers were led by Revd Anne, Revd Peter Rayson delivered the sermon and Guy Boney played the organ. The collection taken outside for the Royal British Legion Poppy Fund was blessed during the last hymn before the singing of the National Anthem.



The Royal British Legion Poppy Appeal 2023



May I, on behalf of the Royal British Legion Poppy Appeal, which took place during the two weeks prior to Remembrance services, thank all of you in the Sombornes and Ashley for your tremendous generosity in support of the 2023 appeal.

Despite the appalling weather, and I cannot remember when the elements have been so bad, my special thanks must go to those volunteers who went out to do the door-to-door collection. This year the QR code was introduced and we await to see the results of this at the end of the financial year in late March.

My thanks must also include the shop, the two pubs, the KSWMC and the School who kindly allowed the boxes of Poppies on their premises. These monies together with the collection taken during the service at The War Memorial and subsequent Wreaths donations, totalled £3,548.33. This does not include Gift Aid and the final total I hope to receive early next year. Thanks to you all.

*Sandie Pepperell
RBL Co-ordinator
Somborne and District*

Dates for your Diary:

Soup and Sherry Lunch



Saturdays

2nd and 16th December

6th and 20th January

in the Parish Church

12.30pm-1.30pm



King's Somborne Working Men's Club

Forthcoming Events:

Saturday 2nd December	Meeting for members only Closure of the club 8.00pm start
Saturday 9th December	Chocolate Bingo 8pm start Open to Everyone
Sunday 17th December	Christmas Raffle To be drawn after Bingo
New Year's Eve	Open evening Family Night Open to Everyone



Mr Jingle is looking for a home

£1 a ticket from

Marilyn Bolton

on 388356

before 12 December.

Proceeds will go to a Village charity.

To All Current Members of the Working Men's Club

We are holding a Meeting on Saturday 2nd December,
starting at 8pm

**This is concerning the closing of the club
on 31/12/2023.**

Please make the effort, as this is important

The Committee KS Working Men's Club

Last posting dates for Christmas by Royal Mail

International Standard & International Tracking and Signature services

Wednesday 6 December:	Australia and New Zealand, Caribbean, China (People's Republic), Africa, Asia, Central and South America, Far and Middle East
Thursday 7 December:	Cyprus and Malta
Friday 8 December:	Greece, Eastern Europe (except Czech Republic, Poland and Slovakia), Turkey
Monday 11 December:	Czech Republic, Finland, Italy, Norway, Poland, Portugal, Sweden, Spain, USA and Canada
Wednesday 13 December:	Austria, Belgium, Denmark, France, Luxembourg, Germany, Iceland, Ireland, Netherlands, Slovakia, Switzerland

Within UK

Monday 18 December	2nd Class and 2nd Class Signed For
Wednesday 20 December	1st Class and 1st Class Signed For and Parcelforce 48
Thursday 21 December	Royal Mail Guaranteed And Parcelforce 24

Allotment Association Bonfire

At what may or may not prove to be their final event on the current allotment site, members of the King's Somborne Allotment Association, along with their family and friends, held their Annual General Meeting on the 5th of November and remembered to celebrate around a bonfire.

Taking care not to set alight the sprouts, suede, parsnips and purple-sprouting broccoli that are still growing towards their winter and spring harvesting, plot holders heard the latest news about the vital fight to retain a quality allotment site within the village and elected their new committee members before getting into the party mode.

Standing around some splendid flames, they lit sparklers and toasted marshmallows.

There was plenty of food and drink, much of it made from ingredients grown right there in that ancient and incredibly fertile soil. There were no fireworks because no one wanted to scare the local slow worms, hedgehogs or badgers.

If you would like to be considered for an allotment on either the current site or on whatever new site is created, please contact: Susie Upfield 01794 388198



Stop Press - Urgent Plea!

Calling all residents of Old Palace Farm, Scott Close, Hunters Close and The Gorrings. We no longer have anyone to deliver The Gauntlet in your area.

We urgently need one or more volunteers to take on this role from January 2024, so that you continue to receive your copy of the magazine.

If you are able to help, please contact Carolyn Ryan: 01794 388743,
ryan_carolyn@hotmail.com

Somborne Garden Club

On a dark October evening, the village hall was lit up by Nick Bailey's 365 days of colour. The Somborne Garden Club invited its members and other gardening friends to an evening of coloured flower magic. The village hall was close to bursting with nearly 100 people enjoying the talk. Best known for presenting on BBC Gardeners' World, Nick has designed and managed numerous gardens throughout the UK, Spain, South Africa and Australia. He created his first Main Avenue Garden at RHS Chelsea Flower Show in 2016 (Silver Gilt). Nick is also the former Head Gardener at London's oldest botanic garden – Chelsea Physic Garden, where he spent seven years redesigning and developing the site and its plant collections for a contemporary audience.

Despite having been on the road since 4.00am on a gruelling trip across Europe to join us, Nick gave an excellent and entertaining presentation showing us how, with clever planting, we can enjoy flowers and colours throughout the year. After introducing us to the colour wheel and how colours work together and how plants make their own use of it, Nick highlighted beautiful plants and planting combinations for every season no matter what type of garden you have. He covered the longest flowering plants, pot recipes and gorgeous plants for different sites. After a question-and-answer session, a lot of attendees took the opportunity to get their own copy of Nick Bailey's book on the subject; personally signed as a memento of the evening where even the most experienced gardener came away with lots of great tips.



Drop In



for a cuppa and a chat
in a friendly, relaxed atmosphere
at the Epworth Hall!
Every Tuesday
(apart from the second one in the month)
from 10:30am to 12 noon.
All proceeds go to charity.
Everyone is welcome!

Carol Singing around the Village

Tuesday 19th December



3 groups meeting at

The Vicarage

or at Stafford Lodge

or at Meadowbrook

**at 7pm for refreshments, then singing round the village
from 7.30pm, and then at the Crown at 9pm.**

Everybody welcome!

Smiles all round at King's Somborne Baby and Toddler Group

As many of you will know, the baby and toddler group that runs from the Village Hall on Wednesday mornings faced financial struggles and possible closure in July of this year. With some hard work and improved advertising, we are very pleased to announce that things are now looking up!

Since we reopened in September, we have been seeing more and more families joining us on Wednesday mornings. It has been a pleasure meeting and welcoming all our new members over the past few months. With the increase in numbers we have been able to cover our rent costs and purchase some new items and craft materials for the children to enjoy.

Along with our usual toys and activities, the group is now able to provide a taste-safe sensory tuff tray for the children to safely explore. We have also started planning messy play sessions at the end of each half term. Our Halloween messy play on 18th October was a huge success and we

welcomed 22 families into that session; our highest numbers in the last 2 years!

We have also been extremely fortunate to receive a very generous donation from a kind local resident which enabled us to purchase a new climbing frame. The old slide was well overdue for retirement after 20+ years of service and was becoming unsafe. We were over the moon to be able to purchase something more suitable and the children have loved having this new equipment to play on.

Thank you to everyone in King's Somborne and beyond for your support in keeping this group running and helping us to thrive. Please continue to tell your family and friends with young children about our friendly group and pop along to the Village Hall on a Wednesday morning (9.30-11am) if you would like to join us.

Kate Johnson - Group Leader

Jingle Jingle! Help our Scouts to raise funds this Christmas...



Festive fundraising is coming to
your door on Saturday 9th
December 2023.

Let the magic of Christmas and the warmth of our
community come together as Kings Somborne
Scout Group bring festive treats to your doorstep!

Your donations will help our village Scout Group
raise much needed funds to keep going in 2024.

HELP SUPPORT OUR SCOUTS!

Are you age 5-14 yrs? If so come and join our
group!

#SkillsForLife

Copyright 2018 The Scout Association Registered Charity numbers 306101/SC038437


Scouts
11th Romsey (King's
Somborne)

Village Christmas Cards 2023



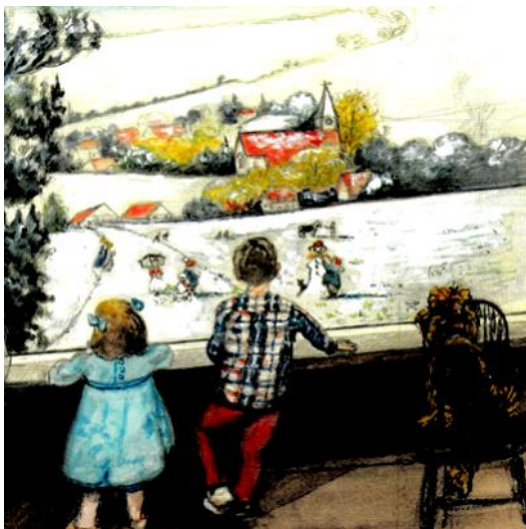
The cards will be available from early November for sale in Cross Stores, the Christmas Fair on Saturday 25th November and other outlets including Church services.

Sold in packs of 8 the 'Nativity' scene will cost £5.50 per pack and 'King's Somborne in Winter' will be £5.00 for each pack. Each will have the greeting 'With best wishes for Christmas and the New Year' inside.

*Louise Causer
01794 388364.*

A new artist in the village, Carolyn Sewell, has painted a wonderful 'Nativity' scene to help raise funds for the Parish Church. It is in light pastel shades of watercolour and sets the Christmas story off really well and we are very grateful that she has given her time to produce such a lovely card.

Caroline Harvey-Bathurst has yet again produced a watercolour titled 'King's Somborne in Winter' and depicts children at the top of Cow Drove Hill looking down on the village at Christmas. We are so grateful as always for her generous contribution not only to us, but to the Hampshire and Islands Historic Churches Trust, which she also supports.



Christmas Mincemeat Galette

An alternative to mince pies!

Feeds 6/8. Oven 200 degs or 180 fan.

You will need:

- * 375g ready rolled puff pastry
 - * Jar of mincemeat
 - * 1 cooking or large eating apple
 - * Optional extra—2 crystallised stem gingers—finely chopped
 - * Milk – a little
1. Cut pastry in half widthways and place one half on lined baking sheet
 2. In medium bowl add mincemeat, grated apple (and optional ginger), mix well and spread onto pastry, to within 1 inch of all 4 sides
 3. Damp edges of pastry with the milk
 4. Take other half of pastry, fold in half lengthways. Starting from 1 inch from one end, and 1 inch from unfolded edge, make cuts $\frac{1}{2}$ inch apart through folded edge and continue along the whole piece of pastry to within 1 inch of other end – sounds complicated, but you will get the idea!
 5. Unfold pastry, placing on top of mincemeat, sealing down edges
 6. Place in preheated oven for 20/25 mins until golden on top
 7. Transfer to serving plate, cutting pastry down the middle and cutting into 8 slices and serve with brandy butter, cream or ice cream

The same can be done with leftover turkey, stuffing etc, or mince



Somborne Community Cinema



Mission : Impossible Dead Reckoning Part 1

(14th December) 12 cert

Ethan Hunt and his IMF team embark on their most dangerous mission yet: To track down a terrifying new weapon that threatens all of humanity before it falls into the wrong hands. With control of the future and the world's fate at stake and dark forces from Ethan's past closing in, a deadly race around the globe begins. Confronted by a mysterious, all-powerful enemy, Ethan must consider that nothing can matter more than his mission - not even the lives of those he cares about most.



Scrapper (11th January) 12 Cert

Living alone since her beloved mum died, Georgie fills the flat they shared with her own special magic. But when her absent father Jason turns up out of the blue, she's forced to confront reality. As they both adjust, Georgie and Jason find that they have a lot of growing up to do. A dreamy, witty and unmissable tale of family and fresh starts, *SCRAPPER* is a film that believes life's not so much about chasing rainbows but snatching fistfuls in both hands.



Tickets for these films are just £6 each and are available from the Somborne Community Cinema web site at www.sombornecommunitycinema.co.uk or at the door on the night.

All screenings are at King's Somborne Village Hall on the second Thursday of the month.

Doors open at 7.15pm and the films start at 8pm leaving plenty of time to get your drinks and snacks from the well-stocked bar.

Stop Press:

Before November's screening of the Barbie movie, the audience were encouraged to wear something pink. They did! And their generous donations meant that a cheque for £201.50 has been sent to Brest Cancer Now — a fantastic achievement!



and captivating stories. Trust us, you won't want to miss this! Tickets for this event are £16 in advance (or £18 on the door).

Tickets for both live gigs are on sale now from our website: www.sombornesessions.co.uk.

Keep your eyes on our website, as we'll soon be scheduling more great live music!

Keith Watson

After October's foray into film, November sees the return of live music to Somborne Sessions. We'll kick off our thirteenth season of live music with True Foxes. An up-and-coming female duo from Cornwall, Amie and Chloe, play a mix of original songs and covers, blending pop-folk songwriting, soft rock/country & wonderful harmonies to create hauntingly beautiful and catchy melodies. True Foxes will be performing for us on Saturday, 11th November. Tickets for this event are £14 in advance (or £16 on the door).



On Saturday, 9 December The Trials of Cato will be coming to the Sessions. Brilliant players who perform with energy and verve, The Trials of Cato pay clear homage to folk, but twist it into a thrilling, entirely modern form. You can expect some stomping tunes



December walk

3½ miles (5.75 km) 1.5 hours

Sunday 31st December 2023

2:00pm

King's Somborne Village Hall

We start by heading across Palace Field and along the bridleway that heads south-west (Path 505). On reaching Romsey Road we cross the road and follow the Roman road to Horsebridge and onto the Test Way. Then it is north along the Test Way and back to the village via the Clarendon Way and Cow Drove Hill.



Clerk

We are delighted that the position of permanent clerk has now been filled. Following interviews, Jordan Dudley has been deemed to be the most acceptable candidate and has accepted the role. Jordan will commence her duties on the 1st of December. As a resident of King's Somborne she will be known to many and her local knowledge will be an asset. Sara Sawyer our locum clerk will provide assistance to Jordan and the Parish Council over the next few weeks to ensure a smooth handover is achieved.

NDP

It is with great pleasure to announce that the NDP was successfully "made", to use the official term, with 90% a vote in favour. (See opposite) Legal challenges can be accepted up until the 22nd of December but can only be based on procedural matters. The NDP now forms part of the Borough Development Plan and its policies will be given full weight when assessing planning applications that affect land covered by the Plan. Thank you to all those individuals who have assisted in its formulation over the years since its inception

Allotments

Our Borough Councillor Ian Jeffrey has voiced council concerns to the appropriate TVBC officers. At this month's Parish Council meeting Cllr Jeffrey informed us that TVBC are considering the points raised by both the council and the allotment association. These are apparently being taken seriously and they will respond in due course.

Bourne

Residents will have noticed that the bourne is running early this year doubtless due the rainfall we have experienced over the last few weeks. Ground water is high for this time of year and, with more rain forecast for the rest of November, it is important the bourne is kept clear of obstructions and riparian owners (those whose properties abut the bourne) take appropriate action to minimise the prospect of flooding. Blockages such as fallen trees should be reported to the Environment Agency (EA) tel 0800 807060. Also keep a watch for the EA flood alerts

A meeting has been held with the EA who have advised that the current resilience plan in case of flooding is being revised as the barriers in the current plan have been found not suitable in other locations. This revised plan will remain in force until the current Property Flood Resilience work being undertaken by the EA in conjunction with owners of properties identified as most at risk is completed. There are still some properties that have not taken up the scheme which expires in 2025 so there is limited time remaining. We asked the EA to re-engage with the owners of those properties to ensure they could join if they so desired. See: Property Flood Resilience - Environment Agency - Citizen Space (environment-agency.gov.uk)

Also discussed was the need for a maintenance plan with all interested agencies involved and a future resilience plan once PFR work is

completed. Further meetings are proposed.

Resilience

The council is now obtaining firm fixed quotes in order to obtain the grant money awarded by SSEN.

Parish Council

The next Parish Council meeting is on Monday the 11th of December at Epworth Hall. Parishioners are welcome to attend and bring to the attention of the council any matter of concern

Graham Searle

Chair King’s Somborne Parish Council

Making of the King’s Somborne Neighbourhood Plan

The King’s Somborne Neighbourhood Plan 2022 - 2037 was 'made' following the positive referendum on 9 November 2023. The Plan forms part of the Development Plan for the parish and will be used to guide planning decisions in King’s Somborne

The referendum result is as follows:

Response	Votes	Percentage
YES	310	90.11%
NO	34	9.88%
Turnout	27.27%	

The made Plan, Decision Statement and declaration of result can be viewed at: King’s Somborne Neighbourhood Plan | Test Valley Borough Council

From 10 November, the King’s Somborne Neighbourhood Plan is subject to a six week period where applications can be made to the High Court on the grounds that the plans are not within the appropriate powers and/or a procedural requirement has not been complied with. This six week period of legal challenge ends on 22 December 2023

*Neighbourhood Planning
Planning Policy
Test Valley Borough Council*

Somborne Sisterhood WI



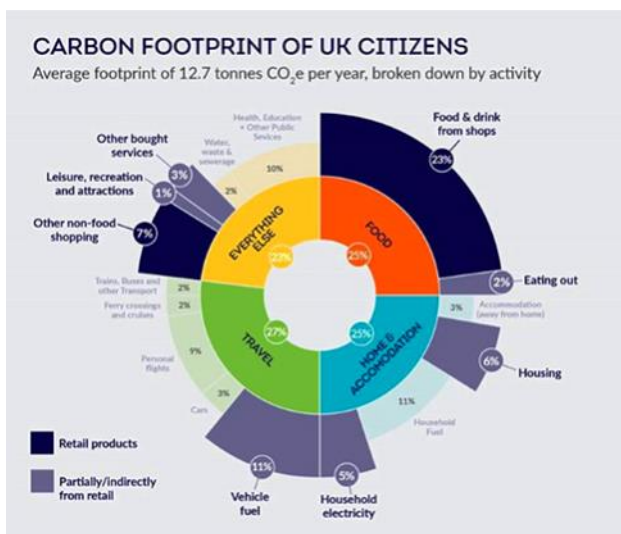
This month we had a very interesting talk from local resident and retired architect Jonathan Rickard called 'The Carbon Challenge'. We learnt that the average UK citizen has a carbon footprint that falls roughly in the middle of a comparison table of countries and that 25% of this originates in the home. However, we also need to focus on travel (also about 25%) and the food we eat (also about 25%) as well as other activities such as shopping and entertainment which are also roughly 25% of our contribution to the carbon problem. We then played Environmental Bingo, which, apart from being great fun, illustrated how much or how little we each do at home to cut down our footprint. Examples of what we can do include buying food in season and having adequate loft insulation. The winner received a banana as a prize - a very good example of a food item very low in carbon footprint in its own packaging.

A short discussion on diet, UK housing stock, retrofitting houses and heat pumps closed a very informative and entertaining evening.

Our December meeting is a members-only Christmas meal. On 5th January at 8.00pm we will have a talk by Pearl Lifestyles called Overcoming Adversity. Guests are very welcome, £7.

For more information on the Somborne Sisterhood, follow us on Instagram or email sombornesisterhood@gmail.com

Jane Nicol



Somborne Community Cinema

**Free Warm Hub Monday Matinees
are Back!**

at King's Somborne Village Hall

The Community Cinema has been awarded a significant grant by the Lottery Community Fund to run the Warm Hub Matinee Film screenings as was done last winter. This is part of the "Warm Spaces and Cost of Living" initiative. There is no ticket needed, no entry fee and refreshments will also be provided.

December 11: My Big Fat Greek Wedding 3

January 8: Swimming With Men

January 22: The Unlikely Pilgrimage of Harold Fry

February 12: Guardians Of The Galaxy Vol 3

March 4: Book Club The Next Chapter

March 25: Summerland

Doors open 1.45pm Film starts 2.15pm

No tickets required : Free refreshments

All children under 16 must be accompanied by an adult



Christmas
with
Southern Voices
Conducted by Jamal Sutton

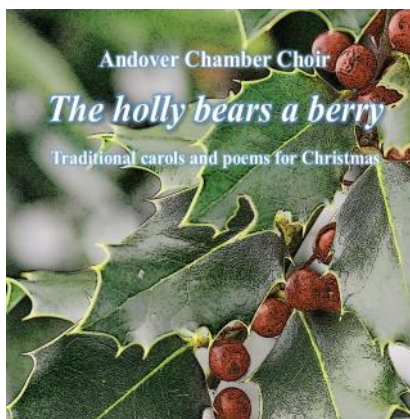
Including Jamie W Hall's new carol *O nata lux*
Victoria O magnum mysterium
Howells Three Carol-Anthems
Rutter Candlelight Carol
Favourite carols for choir and audience

Saturday 16th December 2023 at 7.30pm
Chapel of St Cross, Winchester SO23 9SD

#ChoirsAgainstCancer
supporting
MACMILLAN
CANCER SUPPORT

Tickets: £18 (age 21 and under £1)
Online at southernvoices.co.uk (booking fee applies)
Telephone bookings 0333 666 3366 (additional £2)
Also on the door

SOUTHERN VOICES
www.southernvoices.co.uk



7:00 p.m. Saturday 16th December 2023
St Mary's Church, Andover

Tickets £12 (incl. refreshments) on the door or £10 in advance
from The Lights, Newbury Building Society, Andover,
or from choir members. Under 16s free.



In aid of Andover Food Bank.
www.andoverchamberchoir.org.uk



Jubilee Room
Kings Somborne
Village Hall

Tuesdays

10.00am – 1.00pm

Delicious treats
and coffee

Café closed 26 December
Reopens 2 January 2024





Babes In The Wood

By Damian Trasler, David Lovesy and Steve Clark

Friday 16 February 2024

7:30pm

Saturday 17 February 2024

2:30pm & 7:30pm

TICKETS ON SALE FROM DECEMBER 2023

www.ticketsource.co.uk/somborne-players



What's on in December 2023 and January 2024

Your guide to events in and around the district.

Winchester Science Centre

www.winchestersciencecentre.org

Open weekends and school holidays

9.20am – 5.00pm (last entry 2.20pm).

Weekdays closed during term time.

School holiday dates:

15 December – 1 January 2024

Events – book online

2 December – 2 January: **Science Dinomite—Dino Dig & Dino Discovery**

2 - 23 December & 27 December – 21 January: **Space Rocks We are Aliens**

2 December – 21 January: **The Dino Show**

8 December: **Science Lates: Christmas Cracker**

11 December: **Home Educator Day – Science workshop**

12 December: **Night Sky Live**

16 – 23 December: **Cosmic Christmas**

16 – 23 December: **Starlight Cinema: Elf**

30 December, 20 January: **Pink Floyd: Dark side of the Moon**

11 January: **Night Sky Live**

Mottisfont Abbey

The garden open 10.00am – 5.00pm

House open 11.00am – 4.30pm Cafes

open 10.00am – 4.45pm; shop 10.00am – 5.00pm

25 November – 7 January: **Christmas Journey to the North Pole**

20 January – 14 April: **Heath Robinson at War Exhibition**

Winchester Cathedral

Winchester-cathedral.org.uk

01962 857200

Cathedral open 9.00am – 5.00pm

Monday- Saturday, 12.30pm – 3.00pm

Sunday

Cafe 9.30am – 5.00pm; gift shop

10.00am – 5.00pm

Events

Tower tours Wednesdays 2.15 pm

Saturdays 11.30am and 10.15pm

9 December 7.30pm: **Waynflete Singers St Nicolas concert**

13 December: **Hampshire Medical Fund Concert**

15 December: **Christmas concert; a festival of choirs**

16 December: **Chamber Choir Concert**

18 – 21 December: **Christmas family Craft workshop and tours**

20 December: **Britten's ceremony of carols**

20 January: **Handel Messiah Concert**

Hinton Ampner

hintonampner@nationaltrust.org.uk

House open Wednesday – Sunday

11.00am – 3.30pm, Estate, walled

garden and shops open 10.00am –

5.00pm, Cafe open 10.00am – 4.30pm

25 November – 1 January: A Neverland Christmas

25 November – 1 January: Hinton Ampner house decorated for the festive season. Advance booking essential.

Janet Ingleson

Theatre

Theatre Royal, Winchester

www.theatroyalwinchester.co.uk

30 November – 1 January: **Cinderella**

11 December: **A Christmas Carol**

12 December: **Tenors Un Limited at Christmas**

14 December: **Naomi House & Jack's Place Christmas Movie**

15 - 29 December: **Cinderella (Livestream)**

18 December: **Santa's Christmas Wish**

6 January: **The George Harrison Project**

12 January: **National Theatre Live: Skylight**

13 December: **Susie Dent: The Secret Lives of Words**

14 January: **Down for the Count: A Century of Swing**

17 January: **An Evening with Alan Titchmarsh**

18 January: **Forbidden Nights**

19 January: **Oh What a Night**

20 January: **Pete Firman: TriTok**

24 January – 10 February: **Viggo Venn: British Comedian**

25 January: **National Theatre Live: Dear England**

26 January: **The Jive Aces**

27 January: **The Thinking Drinkers Pub Quiz**

30 January: **UB40 The Legacy**

31 January: **The Elvis Years**

Salisbury Playhouse
wiltshirecreative.co.uk

25 November – 7 January: **Dick Whittington**

25 January: **Fastlove: The Tribute to**

George Michael

26 January: **The One Like Judi Love**

27 January: **Tom David: Underdog**

30 January: **I, Clara**

31 January: **The Magic of Motown**

Plaza Theatre, Romsey

www.plazatheatre.com

5-9 December: **The Complete Works of William Shakespeare**

11-12 January: **Christmas Show**

15 December: **Romsey Comedy Club**

16 December: **The Ultimate Tribute to the Eagles**

12, 13, 19, 20, 21, 26, 27 December
Dick Whittington

Mayflower Theatre

mayflower.org.uk

30 September – 16 December:
Theatre Tours

29 November – 2 December: **English National Ballet Nutcracker**

9 – 11 December: **Snow White & the 7 Dwarfs**

4 January: **Thank you for the Music**

6 January: **New Year Viennese Gala**

9 – 14 January: **Everybody's Talking about Jamie**

16 – 21 January: **The Wizard of Oz**

23 – 27 January: **I should be so Lucky**

The Chesil Theatre, Winchester

chesiltheatre.org.uk

20 – 27 January: **Private Lives**

The Watermill Theatre

watermill.org.uk

17 November – 31 December: **The Wizard of Oz**

Janet Ingleson

Village diary for December 2023

Every Monday	6.00pm	Beavers
	7.30pm	Badminton (September –May)
Every Tuesday	10.30am	Drop in coffee (except the second Tuesday)
	10.00am	Somborne Cafe (not Boxing Day)
	7.45pm	Somborne Singers
Every Wednesday	9.30am	Parent, Baby and Toddler Group
	2.00pm	Dial-a-ride
	7.00pm	Scouts
Every Thursday	2.00pm	Needleworkers
	6.00pm	Cubs

School holidays, Bank Holidays and other events may cause changes; contact the names given on pages 2 and 3 of this magazine for details.

1st	WI Sisterhood	8.00pm	14th	Community Cinema	7.15 for 8.00pm
2nd	Soup & Sherry	12.30pm		Dead Reckoning	
2nd	Working Men's Club Meeting	8.00pm	16th	Soup & Sherry	12.30pm
5th	Computer cafe	10.00am	19th	Carol singing round the village	7.00pm
6th	Contemplative Prayer	7.30pm	20th	Contemplative Prayer	7.30pm
9th	Somborne Sessions	8.00pm	19th	Computer cafe	10.00am
11th	Warm Hub Cinema	1.45 for 2.15pm	19th	Short Mat Bowls	2.00pm
	My Big Fat Greek Wedding				
11th	Parish Council	7.00pm	27th	Women's Fellowship	2.30pm
12th	Epworth Lunch	12.30pm	31st	Footpath walk	2.00pm
13th	WI	7.30pm		See page 15.	

Village diary for January 2024

Every Monday	6.00pm	Beavers
	7.30pm	Badminton (September –May)
Every Tuesday	10.30am	Drop in coffee (except the second Tuesday)
	10.00am	Somborne Cafe
	7.45pm	Somborne Singers
Every Wednesday	9.30am	Parent, Baby and Toddler Group
	2.00pm	Dial-a-ride
	7.00pm	Scouts
Every Thursday	2.00pm	Needleworkers
	6.00pm	Cubs

School holidays, Bank Holidays and other events may cause changes; contact the names given on pages 2 and 3 of this magazine for details.

2nd Computer cafe	10.00am	16th Computer cafe	10.00am
2nd Short Mat Bowls	2.00pm	16th Short Mat Bowls	2.00pm
3rd Contemplative Prayer	7.30pm	17th Contemplative Prayer	7.30pm
5th WI Sisterhood	8.00pm	18th Over 50s Minibus Trip	11.30am
6th Soup & Sherry	12.30pm	20th Soup & Sherry	12.30pm
8th Warm Hub Cinema Swimming with Men	1.45 for 2.15pm	20th Somborne Sessions	8.00pm
11th Community Cinema Scraper	7.15 for 8.00pm	22nd Warm Hub Cinema Pilgrimage of Harold Fry	1.45 for 2.15pm
11th Parish Council	7.00pm	24th Somborne Society	8.00pm
12th Epworth Lunch	12.30pm	24th Women's Fellowship	2.30pm
13th WI	7.30pm	28th Footpath walk See page 28	2.00pm
		30th Short Mat Bowls	2.00pm

District diary for December 2023 and January 2024

17 November – 21 December

Winchester Christmas Market

24 November – 6 January

Mid Hants Railway

email: info@watercressline.co.uk

1, 2, 3, 8, 9, 10 December

Salisbury Craft and Gift Market

10.00am – 4.00pm

Salisbury Guildhall, Market Place

1 December

Stockbridge Christmas Lights Up

2 December

Romsey Town Hall Craft & Gift
Market

2 December

Ampfield Village Market 10.00am –
12.00 noon at Village Hall

4 December

Open days at Romsey Signal Box

SO51 8LG Enquiries to
www.romseysignalbox.org.uk

5 December

Andover the Lights

Jingle Bell Rock

6 December

Andover the Lights 7.30 pm

Justin Moorhouse

6 December

Stockbridge Cinema

Alex Lewis Mountain 4.30pm and
7.30pm

7 December

Andover Face 2 Face Morning Speed

Networking 7.00am – 9.00am

Andover Masonic Hall

9 December

Stockbridge Cinema: The Nutcracker

9 December

Romsey Antiques Fair

9.00am – 4.30pm Romsey Town Hall

11 December

Romsey Town Hall Cinema

The Holiday 3.30 pm & 7.00pm

22 December

Romsey Abbey 7.30 pm

The Romsey Singers

1 January

Sir Harold Hillier Gardens

New Year's Day Guided Tour

10.30am

5 January

Toothill Observatory

Public Open Evening

7.30pm – 11.30pm

Info & tickets: Go Stargazing

7 January

Sir Harold Hillier Luxury Christmas

Chocolate Making Workshop

10.30am – 12.30pm or 2.00pm–
4.00pm

8 January

Five to Thrive, New Parent Course

10.30am – 12.00 Romsey Library

Book: Eventbrite.co.uk

21 January

Romsey 5 mile Broadlands Estate

Every Tuesday and Saturday

Salisbury Market 8.00am – 3.00pm

Salisbury Market Place

Every Tuesday, Friday and Saturday

Romsey Market at the Corn Exchange

8.30am – 2.30pm

Janet Ingleson

Somborne and District Society



As 2023 draws to a very soggy close it's good to remember the many sunny and warm days we have had this year. We also hope you remember the talks and other activities organised by the society this year, with more to come before the year ends.

In October, Dr Tony Pratt delivered his talk on 'Walled Gardens and their development through examples from 'Gentlemen's Estates''. This interesting talk covered many aspects of walled gardens including slightly curved glass on early greenhouses to channel water away from the wooden structure, double-skinned walls heated by a fire, exotic pineapple pits warmed with manure, and sometimes less than complimentary commentary on how some gardens were used!

The 2023 'John of Gaunt Award' for the district's primary school children, aged 6-11 years old, launched in October. A presentation at the village school was enthusiastically received by the children. Afterwards, there was a request for an additional class competition for the four and five year olds which we are pleased to add. We are looking forward to receiving the entries by 22nd November and judging over the Christmas period. Mary Harris, from Romsey Local History Society, has generously offered to work with us to independently assess the entries.

At the time of writing, we are looking forward to our November festive entertainment event, with The Madding Crowd presenting their Christmas Programme, including carols, songs, and a Mummers' Play.

The society will have a stall at the Christmas fair in the Village Hall on Saturday 25th November. We are also looking forward to our annual Christmas Meal on the 6th December at the Abbots Mitre in Chilbolton.

Our next talk, “

'Table for Two – Prehistoric Menu Please', will be on the 24th January 2024 at 7.30pm for 8.00pm in the Village Hall. Tricia Silver-Warner will talk to us about prehistoric cookery, foods and sustainability.

The Somborne and District Society is a long running and popular group with a significant membership. We arrange talks on history, archaeology, and other topics of interest to members. We organise social events, exhibitions, and visits. We produce booklets, a quarterly newsletter and have an archive accessible to members. We are a registered charity and are run by a friendly group of people, but we do have a problem. Some committee members now want to step-down after contributing for many years. We really need new people to join the committee and help with the running of the society. Please seriously consider joining us and supporting your local community. Let's chat about how you can help, with the support from other committee members, for a fresh challenge in January.

We wish you all a Merry Christmas and a happy and healthy 2024.

Steve Silver-Warner (Chair)
somsoc@silver-warner.co.uk

King's Somborne WI



Linda Aucock ran this evening's meeting in the absence of Sarah. She gave details of next year's spring meeting being held in Winchester. She asked for donations for the upcoming Christmas fair. We were asked about our preferences for the refreshments for our Christmas meeting. The majority voted for buffet food provided by Jude of the Crown. We still need to bring a secret Santa gift valued at about £5. The Christmas lunch will be on 4th January 2024 in the Crown. Tina informed us that we have a healthy bank balance.

Linda then introduced our speaker for the evening, Samantha Boot, a resident of King's Somborne whose subject was "Garlick Lane – a Creative Residency".

Samantha has a degree in textiles but since graduating has had a number of occupations. She was a journalist, had a family and has worked in schools, but always missed her creative work. During Covid lockdowns she walked every day along Garlick Lane, near Hoplands, noticing and collecting roots leaves, twigs, oak galls and other natural objects, from which she makes natural dyes. She successfully applied for a one year art grant and enjoyed the time and space of lockdown to really

look and notice the changing seasons. Samantha used her dyes to colour fabrics, lace, ribbon and other textiles which she stitches to create pictures, maps, scrolls etc... to help her to remember her walks. She also makes 3D objects including using stones to make amulets to treasure, decorated with pictures and symbols from the past and from folk-law. She also makes models called 'story vessels' made from dyed fabrics and decorated with stitching containing poems or stories as souvenirs of special occasions. She has donated objects for talks and exhibitions for example in Ashley Church and also to help people launch fundraising projects. She has also written a book.

At the end of her talk she invited questions from the audience and allowed us to inspect examples of her work. The vote of thanks was given by Frances Shone.

Beryl Knight

January walk

5½ miles (8.75 km) 2.25 hours

Sunday 28th January 2024

2:00pm

King's Somborne Village Hall

We leave the village along Winchester Road and up Red Hill before turning onto the path past Ashley New buildings. At the crossroads we take the path across the field past Ashley Manor Farm and then over the hill to Chalk Vale before returning to the village past the beef unit and back along Winchester Road.



Services for the over 50s

Sue 388 884 & Gill 388 831

Do contact us if you need any support or have anything that is worrying you.

Blue Badge applications, attendance allowance, pension credit, dementia support services etc



Epworth Lunches

Tuesday December 12th 12.30pm £7

*** Christmas Lunch Turkey ***

*** All the Trimmings***

*** Mince Pie * Cream ***

*** Coffee ***



Tuesday January 9th 2024 12.30pm £7

*** Fish Pie * Peas * Carrots ***

*** Lemon Meringue Pie ***

• Coffee *

• Booking essential - Marilyn 389 356

Over 50s Minibus Trips

Booking essential

Phone Sue 388884

Thursday January 18th 2024



Lunch at the Chestnut Tree

£10.00 Pick up 11.30am Home for 3.00pm

AUDITIONS

Announcing auditions and timings for Stockbridge Amateur Dramatics Society's next production to be performed in April 2024:

BRONTË

BY POLLY TEALE

AGAINST A BACKDROP OF DRINK &
DRUGS, THE SISTERS WRITE...



Reading of the play

Thursday 7th December, 7.30pm, Stockbridge Town Hall (Downstairs)

Auditions

Thursday 14th December, 8pm, Stockbridge Town Hall (Upstairs)

Extra Audition slot if required

Sunday 17th December, 2pm, Stockbridge Town Hall (Upstairs)

Rehearsals

January to April - times and dates to be decided by Director and Cast

Performance Dates

Thursday 11th, Friday 12th and Saturday 13th April 2024

All are welcome, whether you are interested in being a member of the cast or crew, or would just enjoy a couple of hours reading a really great play!

SADS

Back by Popular Demand

The **Geriactors** present

Murder, Mystery and Suspense

'Curtains for Someone'

Friday 2nd February 2024

6.30 for 7.00pm

King's Somborne Village Hall

Two course dinner - Bar

Tickets £22.50 each from Cross Stores

or

Tables (for 8) £180 from

Tony Brooke-Webb - 01794 388989

or John Davies - 01794 389544

In aid of the Village Hall development fund

Covid and Flu vaccinations

We finished giving covid vaccinations at the end of October. Over 2500 patients have been vaccinated. We still have flu vaccinations available – please call the surgery to book an appointment.

Hampshire COVID helpline

If you are eligible and haven't yet received the covid vaccination you can contact the Hampshire Covid Helpline on 0300 561 0018. The line is open 9.00am - 5.00pm, Monday - Friday and 9.00am - 1.00pm on Saturdays and Sundays.

Saturdays

Stockbridge Surgery is open on Saturday mornings for patients collecting medication and routine booked appointments. We are not contracted to provide a service on Saturday mornings and only have a skeleton staff working. Please call 111 for urgent healthcare at the weekend.

Hospital transport and appointments

From 1 November patients can book their own hospital transport to get to appointments. This is only for eligible patients. Patients can book up to 20 days in advance and must book at least

2 days in advance. Bookings can be made by logging onto <https://managemybooking.scas.nhs.uk/patientzone> or calling 0300 123 9833.

Blood test results

If you have the NHS App you should be able to see test results from 18 October 2023. Please check the NHS App before contacting the surgery regarding test results

Looking ahead

If you will run out of medication on 25, 26 or 27 December, please ensure you request medication by Monday 18 December.



New director for Stockbridge Music.

Tim Lowden has handed over the role of Music Director to Paul Wing after 11 years at the helm.



Stockbridge Community Cinema

Wednesday 6 December 4.30 pm and 7.30 pm

Alex Lewis Mountain (12A)

The film follows Stockbridge resident Alex Lewis, six years after he lost his arms and legs to septicaemia, as he sets out to prove that anything is possible – by climbing the highest mountain in Ethiopia with an off-road, solar-powered mobility handcycle. After each screening there will be a 30-minute Q&A session with Alex Lewis, Director Simon Ratigan, and Executive Producer David Collinson. *All proceeds from ticket sales for this event are being donated to the Alex Lewis Trust.*

Saturday 9 December

The Nutcracker (U) 5.00 pm and 7.30 pm

A recorded live event from 2018 of Peter Wright's enchanting interpretation of The Nutcracker for The Royal Ballet. Presented in a festive period setting with vivid designs and spellbinding stage effects, which include authentic Christmas tree decorations that magically come to life, and Tchaikovsky's sumptuous, iconic score combine to create the quintessential Christmas ballet – an opulent treat for the senses for audiences of all ages.

Friday 19 January 7.30 pm

Good (15)

A National Theatre production filmed live at the Harold Pinter Theatre in London in 2022 in which David Tennant makes a much-anticipated return to the West End in a blistering reimagining of one of Britain's most powerful political plays. As the world faces its Second World War, John Halder, a good, intelligent German professor, finds himself pulled into a movement with unthinkable consequences. The screening will be followed by a Q&A session with director Dominic Cooke.

Wednesday 24 January 3.45 pm and 7.30 pm

Oppenheimer (15)

During World War II, Lt. Gen. Leslie Groves Jr. appoints physicist J. Robert Oppenheimer to work on the top-secret Manhattan Project. Oppenheimer and a team of scientists spend years developing and designing the atomic bomb. Their work comes to fruition on July 16, 1945, as they witness the world's first nuclear explosion, forever changing the course of history.

Information common to all films:

Showing at Stockbridge Town Hall SO20 6HE. Tickets are available online (from 1 January for the January films) (**£10.00** for the December films, **£6.00** for the January films, incl £0.50p booking fee per ticket) via www.stockbridgecinema.org.uk or by telephone from TicketSource 0333 666 3366 (£2.00 charge per telephone booking in addition to the online ticket price). Please visit our website for full details of our films.

Village Hall news

This has been a successful year for the Village Hall, hosting wedding receptions, parties, live music and corporate events in addition to being the hub of regular community activities. The high-quality facilities continue to attract new users and we are pleased to announce that in the new year there will be a weekly Pilates class on a Friday morning with Adam Walder.

We have two new members joining the management committee and would encourage those who run the regular events to also consider joining us.

With Christmas not far away, the Hall is currently available over the festive season, so if you are looking to host a large group of family and friends and

think your home/oven may not be large enough, why not think about hiring the hall?

To all our hirers and regular visitors, we thank you for your support in using the Hall, wish you all a happy Christmas and look forward to welcoming you again in 2024.

The Village Hall is a venue that is available to everyone. To see what's on, what is available or to make a booking please go to the Village Hall web site:

www.kingssombornevillagehall.co.uk

Should you have any questions, queries, or concerns regarding the Village Hall, please get in touch at enquiries@ksvillagehall.uk

Community Asset Fund open for applications

Not-for-profit, charitable community groups and organisations can apply to the Community Asset Fund for a grant of up to £25,000. Applicants can apply for up to 50% of the total cost of a project to provide new or to enhance existing community assets and facilities. A total of £300,000 will be available for groups in Test Valley in this round of funding.

In recent years funding has been awarded to numerous organisations to support their projects, ranging from community shops to village halls, from purchasing community green space to new playground equipment. Successful applicants often find that in addition to the financial value, the endorsement of the local authority is also a key benefit when approaching other regional or national funders.

The fund will open for applications on Monday 13 November and close at 11.59pm on Sunday 14 January 2024.

Further information, including how to apply can be found here: <https://www.testvalley.gov.uk/communityandleisure/workingwithcommunities/communitygrants/caf>

Potential applicants are encouraged to contact their Community Engagement Officer in the first instance for guidance on what makes a good application. Details of the Community Engagement Officer for each area can be found here: www.testvalley.gov.uk/ceofficers

Dave Growcott
Community Manager
Test Valley Borough Council

Christmas Decoration of the Church

15th and 16th December

Please come along and join us in decorating the church for our Christmas celebrations.

On Friday 15th December, at 9.30am, we shall meet in the church to prepare posies for the pew ends and slightly larger arrangements for the window ledges. We work with holly, ivy and other evergreens and berries. The decorations are all easily made, so don't feel that you need florist skills to participate – all are welcome.

On Saturday 16th, we shall meet at 9.30am to add any extra foliage and finishing touches to the pew ends, complete the arrangements with candles and add extra decorations to the pillars, font and pulpit.

If you feel able, and would like to participate on either day or both, please contact Pollyann, to say when you would like to help.

All foliage and accessories will be provided but you may like to bring your own secateurs if you have them.

Pollyann Monk
01794 388482 / 07702 601846



How Village Churches Thrive

King's Somborne Parish Church

Study Day – open to all – 10-4 The New Vicarage

Saturday 27th January 2024

We will be looking at the book 'How village churches thrive', which we would ask you read and make notes on beforehand, and then working out how we can move forward with our church to make it more relevant and accessible to those in the community.

Copies of the book are available to borrow from the church

A soup lunch will be provided as well as tea, coffee and cake.

Please do come along as we look forward to the next chapter in the long history of the church as the centre of our community.

Please sign up on the list in the back of the church so that we can cater appropriately.



The Methodist Church is holding its Advent Carol Service on
Sunday 3rd December at 3pm.

This is an all-age-worship service.
Do come and join us and bring your family and friends.

Our theme is centred around the Advent Wreath.
Come and learn more about it and the meaning of each candle.

Join in our worship and singing at such an important time of the year!

The service will be followed by mince pies and coffee/tea.





Christmas at King's Somborne Parish Church |



3 Dec Advent Sunday Morning Worship 10am



17 Dec Carols by Candlelight at 6pm
at the Parish Church



19 Dec Village Carol Singing in 3 groups. Starting 7pm at
the Vicarage, Stafford Lodge, and Meadowbrook for
festive refreshments; then singing around the village from
7.30pm, and finishing at the Crown about 9pm



24 Dec Christingle Service for All Ages
at 4pm at the Parish Church



24 Dec Midnight Holy Communion at 11.15pm
at the Parish Church



25 Dec Christmas Day Family Holy Communion at 10am
at the Parish Church



25 Dec Christmas Worship at Ashley at 11.15am



Ashley St Mary

Our celebrations for Christmas start with outdoor **Carol Singing** which takes place on **Wednesday, 13th December** at 6.30pm. Last year's event was very successful and it should be good fun. There will be fires to keep everybody warm as well as mince pies and mulled wine! All are welcome, so we are hoping to see you.

Our **Christmas Service** will take place on **Christmas Day** at 11.15am and will be conducted by Rev. Anne Newport. Again, all are welcome and refreshments will be served.

Terry Mackintosh



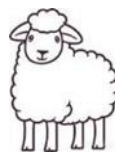
Messy Church Gateway for sheep!

There was a sense of expectation and excitement as children and family members arrived at the Methodist Chapel on the third Sunday afternoon in November for free fun, games, crafts, Bible Stories and food. It's Messy Church!



This term's theme is Shepherds, and the subject this time was Jesus, the Good Shepherd, who knows us all by name, and is 'the gateway' to a safe place. We crafted sheep-pens and gates from lolly sticks, made edible sheep from pretzels and marshmallows, and sheep finger-puppets, we made doorhangers and intercoms with cups and string, and hunted for lost sheep all over the place.

Then we had a visit by a real-life shepherd with a real-live lamb, just 6 months old! After storytime and songs, we joined round the food table for sandwiches and cakes. Everyone had a brilliant time! The next Messy Church (Christmas Edition) is on Sunday 17th December at 3.00pm. Let's put it in the diary now!



Please join us!

Howard

From the Parish Registers

Baptism 1.11.2023 Delilah Rose Matthews



Prayer Group

Monthly on the first Monday of the month, 2.15pm for 2.30pm at
Shappon, opposite the church

All Welcome!

Parish Home Group

Weekly on Thursdays, 7.30 - 9.00pm during term time

Contact Howard Rowe for details

howard_rowe@btopenworld.com or 01794 388400

CONTEMPLATIVE PRAYER MEETINGS 2023

These meetings are for those who seek the opportunity to practice silent prayer and contemplation with others.

The meetings are held on the 1st and 3rd Wednesday in each month at 7.30pm. They will take place at the New Vicarage, Romsey Road in Kings Somborne and 1 Highfield Cottages in Up Somborne on alternate dates.

If you wish to know more information or venue, please phone Jane Duncan on 01794 388059 or 07766 811623

Next meetings:
6th and 20th December,
17th January,
7th and 21st February,
6th and 20th March,
3rd and 17th April,
1st and 15th May.



Jane Duncan 01794 388059

Church services in December

Parish Church

3rd December—First Sunday in Advent

8.00am Holy Communion (1662)

10.00am Morning Worship

Readings:

Jane Duncan: *Isaiah 64.1-9*

Louise Causer: *Mark 13.24-37*

10th December Second Sunday in Advent

10.00am Holy Communion

Readings:

Guy Boney: *Isaiah 40.1-11*

Alwena Rowe: *Mark 1.1-8*

17th December—Third Sunday in Advent

10.00am Holy Communion

Readings:

David Pye: *Isaiah 61.1-4,8-11*

Sandie Pepperell: *John 1.6-8,19-28*

6.00pm Carol Service—Carols by candlelight

Sunday, 24th December—Christmas Eve

NO 10.00am SERVICE

4.00pm Christingle

11.15 p.m. Midnight Mass

Preacher: Revd Anne Newport

Readings:

David Evans: *Isaiah 52.7-10*

Sabine Burningham: *John 1.11-14*

25th December—Christmas Day

10.00am Holy Communion

Preacher: Revd Anne Newport

Readings:

Jane Duncan: *Isaiah 9.2-7*

Alwena Rowe: *Luke 2.1-14*

11.15am Christmas Worship at Ashley

31st December -

10.30am Group Morning Service at Michelmersh

Methodist Church

3rd December

No morning service

3.00pm Advent Carol Service

Rev Peter Rayson

All age worship

10th December

10.30am Rev Bob Kitching

Holy Communion

17th December

No morning service

3.00pm Messy Church

24th December

10.30am Mrs Elizabeth Britton

24th December

10.30am Local Arrangement

Roman Catholic Churches

St Thomas' Stockbridge

St Joseph's Romsey

St Andrew's N. Baddesley

Details of services at RC churches, see:

www.hampshiredowns.org.uk and

www.stswithunwellsparish.org.uk

Church services in January

Parish Church

7th January—The Epiphany

8.00am Holy Communion (1662)

10.00am Morning Worship

Readings:

Louise Causer: *Isaiah 60.1-6*

Chris Kirby: *Matthew 2.1-12*

14th January—The Baptism of Christ

10.00am Holy Communion

Readings:

Jane Duncan: *Genesis 1.1-5*

Alwena Rowe: *Mark 1.4-11*

21st January—The Second Sunday of Epiphany

10.00am Holy Communion

Readings:

Sue Jackson: *1 Samuel 3.1-10(11-20)*

Linda Aucock: *John 1.43-51*

28th January—Candlemas (United Benefice Service at King's Somborne)

10.00am Holy Communion

Readings:

Sandie Pepperell: *Genesis 14.17-20*

Linda Aucock: *John 2.1-11*

Methodist Church

7th January

10.30am Rev Bob Kitching

14th January

10.30am Mrs Su Parsons

21st January

No morning service

3.00pm Messy Church

28th January

10.30am Rev Peter Rayson

Communion/Covenant service

Roman Catholic Churches

St Thomas' Stockbridge

St Joseph's Romsey

St Andrew's N. Baddesley

Details of services at RC churches, see:

www.hampshiredowns.org.uk and

www.stswithunwellparish.org.uk

Coffee and (Optional) Crafts

10-12 every Thursday at

St Peter's and St Paul's Church

All are welcome

Bring along your own project or learn something new

For further information contact Rev'd Anne Newport on 01794 651616

Please note that there will be no coffee morning on 21st December and 28th December

The Minister has the last word

Last Christmas, I wrote to you that I feared that the war in Ukraine would be continuing and sadly my fears were well founded. The likelihood of a ceasefire there seems still a remote possibility, although one for which we continue to pray. Now a new conflict has begun in the Middle East and while we support the aid agencies who strive to give support and hope to the innocent victims there, we also nervously wait to see what the longer term effects of this conflict will be.

In October, my wife and I holidayed in Paphos, in Cyprus and we were that at the time Hamas attacked Israel. Before we even returned, over 2500 Jews who lived near the border with Gaza had fled to Cyprus. Since then, hundreds of Lebanese have also fled to Cyprus, fearing an escalation of the conflict to the Lebanese border. The Cypriot government is now seeking safe passage to send aid ships directly to the UN agencies in Gaza.

Through all this pain and suffering, the ephemera of Christmas is once more in our shops, the tinsel and the fairy lights seeming far removed from the suffering we are witnessing. In the face of this suffering, how can we justify the extravagant feasting and present giving of this festival?

Returning to Paphos, the Bible tells us that, in the early days of Christianity, St Paul travelled there with his companions Barnabus and John, telling their tales of Jesus, the Messiah and convincing the Roman proconsul of the truth of their message. For those of you who have not visited, one remarkable thing about Paphos is how much of the Roman city still exists. You can see the city gates through which Paul walked, you can walk the public square where he would have spoken, you can see the remains of the building where he met the proconsul, all just ten to fifteen years after Jesus was executed. I'm a great lover of books, but sometimes nothing can compare to actually seeing it yourself.

I have never visited the Holy Land and it seems unlikely that I will be doing so in the near future but, speaking to those who have, their response is much the same as mine to Paphos. Visiting the sites which we read about in the Bible helps to make what we read more real. It reminds us that Jesus was a real child, born in a small town, under military occupation. The places he travelled, the place he was executed are all there to see. Just as Paul was a real man in a real place, so was Jesus.

Christmas is not just a story written to cheer those under oppression. Christmas is a story of a real hope brought to a people who were desperately in need of that hope and, as I am sure you can see, that hope is needed just as much today as it was back then.

So, despite all the terrible things which are happening in the world, Christmas is a time worthy of celebration because what we are celebrating is the birth of hope in a better future for all people, everywhere.

May you have a joyful, blessed and hopeful Christmas.

Reverend Peter Rayson

The Vicar has the last word

Welcome, welcome to the stable this Christmastide. Whatever your beliefs or none, welcome, come and gaze at pure innocence, undefiled and uncorrupted.

Welcome, come in to the stable in all its chaos and dirt, and pause, stand, sit or kneel as you will and remember how it was for us as we came into the world, needing only basic nourishment.

As we study that innocent babe, let us work towards getting back to that state, peeling away the layers of rubbish we have accumulated, one by one, until we too can be satisfied with just the basics in life.

As we study that innocent babe and prepare for a new year let us strive to reflect on our own lives, to work harder to strengthen our ties with our friends, families and communities so that together we will build a better world, one where love and peace reign supreme.

That way, when we sing 'peace on earth, goodwill towards men' we may have the focus to really mean it this year, and the determination that through our sharing, through our caring, through our action, we will each be making a difference to this wonderful world we have been given.

Welcome to the stable, and I wish you all a blessed and peaceful Christmas and every blessing for the coming year.

Anne

Reverend Anne Newport
Associate Minister, King's Somborne



Christmas and New Year bin collection dates

Normal collection day

Monday 25th December

Tuesday 26th December

Wednesday 27th December

Thursday 28th December

Friday 29th December

Monday 1st January

Tuesday 2nd January

Wednesday 3rd January

Thursday 4th January

Friday 5th January

Revised collection day

Saturday 23rd December

Wednesday 27th December

Thursday 28th December

Friday 29th December

Saturday 30th December

Tuesday 2nd January

Wednesday 3rd January

Thursday 4th January

Friday 5th January

Saturday 6th January

Garden waste

Garden waste collections will not take place between Monday 18th December 2023 and Saturday 30th December and collections will be a day later than usual in the week commencing Monday 1st January 2024.

TEST VILLAGES U3A

Thursday 7th December - Christmas Social

(Members only)

Thursday 4th January - Jennifer Harbrow presents “Ralph Dutton, the man, the house, the garden”

Jennifer has worked at Hinton Ampner for the last five years.

Ralph Dutton created his own house and garden at Hinton Ampner
which he left, on his death, to the National Trust

Meetings start at 14.00 (doors open at 13.40) in Chilbolton Village Hall

New members are welcome to attend our meeting

Find out more about our Test Villages group at u3asites.org.uk/test-villages

ATH Machinery

www.athmachinery.co.uk



British Agricultural
and Garden Machinery
Association

Garden Machinery Specialists. Sales, service, repairs, and spare parts. All makes and models catered for.

25 years + industry experience, family run company with strong, honest values.
Keep an eye on our website - WE'RE GROWING! www.athmachinery.co.uk

Located in central Hampshire, Brightside Farm,
Salisbury Road, Broughton, Hampshire. SO20 8BX

*Tractors, mowers, cut and collect mowers, pedestrian mowers,
landscaping machines, aeration, zero-turn mowers,
cylinder / rotary mowers, implements, utility vehicles,
remote control mowers, chippers and shredders.*

Contact: Tim Lane on 07818 104864
tim@athmachinery.co.uk



Gas LPG Oil

Monthly payment options available

Established 2009 and based in Romsey, we carry out the installation, service and maintenance of all gas, LPG, oil fired heating systems and oil tanks in and around Hampshire.

We are Worcester Bosch Accredited Installers allowing us to offer you up to 12 years guarantee on gas and LPG boilers and up to a 7 year guarantee on oil boilers.

Call: 01794 651123 email: info@heatwaveonline.co.uk

Web: www.heatwaveonline.co.uk



100151



BOSCH





Family Owned Funeral Directors

*Serving Romsey and district for over 100 years,
and through three generations of the Peace family*

122 The Hundred, Romsey

Email: peace@ahcheater.co.uk www.ahcheater.co.uk

Tel: 01794 513393

Personal attention from Simon & Michael Peace and their experienced team

5 Rownhams Road North Baddesley

Email: northbaddesley@ahcheater.co.uk www.ahcheater.co.uk

Tel: 02382 358860

Personal attention from Graham Lusty

Private Chapel of Rest
24 Hour Service



SELECTED
Independent
FUNERAL HOMES
Member of Insurance



G J Booth
MAINTENANCE SERVICES

- *uPVC Fascia, Soffits, Guttering*
- *Wall Cladding (pvc & composite)*
- *Cleaning (of the above)*
- *Roofing*

Based in Salisbury, trading for over 30 years and Checkatrade approved.

Fully insured, works and materials guaranteed.

In association with Salisbury Glass.

01722 697459 / 07470 524125 prateek@gjbooth.co.uk

www.gjbooth.co.uk

Myddelton&Major

MONXTON



STOCKBRIDGE



OVER WALLOP



We specialise in property in the beautiful Test Valley and surrounding villages.

If you are thinking of selling or would like advice on any property matter, please contact us.

AlexisKirchell@myddeltonmajor.co.uk

DavidSmith@myddeltonmajor.co.uk

01264 810400

The Old Police House, High Street, Stockbridge, SO20 6HE

www.kocreations.co.uk

Based in King's Somborne

Sharpening services at competitive prices

Lawnmower blades

Hedge cutter blades

Edging Shears

Hedging Shears

Chainsaw chains, including removal and assembling back on to the bar and saw

Call Owen, "The Sharpening Guru"

07958 700488 or email hello@kocreations.co.uk



see me at www.trustatrader.com



Mark Oliver
PLUMBING & HEATING



INDEPENDENT FAMILY BUSINESS - ESTABLISHED 2002

All Domestic Plumbing Undertaken

Fully insured & Qualified Plumbers
covering Hampshire area

Solar Hot Water & Air Source Heat Pump Installer

Oil Boiler Heating Specialist

Oil Boiler Installation & Servicing

Approved Grant Boiler Installer

12 Month Guarantee on all Installations

Finance Available - Senior Citizen Discounts
Card Payments Accepted

07743 386 540

01489 876 556 - 01962 435 026

— www.moliverplumbing.co.uk —
email: moliverplumbing34@gmail.com



Access Care

**DO YOUR PARENTS NEED
A LIVE-IN CARER?**

**CALL NOW
FOR A BROCHURE & BOOK YOUR
FREE, NO OBLIGATION,
LIVE-IN CARE EXPLORATORY MEETING
IN YOUR OWN HOME**

01264 319 399



5 STAR REVIEWS

**"PROFESSIONAL, ORGANISED, THOUGHTFUL, CARING AND
FRIENDLY. CONSTANTLY GO ABOVE AND BEYOND."**

WWW.ACCESS-CARE.CO.UK

Pilates
at
Kings Somborne Village Hall
Tuesdays, 9-10am

A simple and controlled way to improve flexibility,
build core strength and develop control and endurance
through the entire body.

Contact: Helen 07790 036920
helen@core-align.co.uk www.core-align.co.uk

CoreAlign
Pilates and Sports Massage

To advertise here

Contact our advertising manager, Sue Byram

01794 388521 subyram@aol.com

(The cost to cover the next 4 editions—February through May—would be £36)

TW Glazing and
Window Repairs

01264 782211 / 077 652 60922 / 077 878 53289

*Replacement misted double-glazed units and single-glazed units
into existing frames. Also hinges, handles, locks and gaskets.
Cat-flaps into UPVC doors and greenhouse glass installation.
Face-puttying where needed and for listed buildings.*

FREE QUOTES AND ADVICE. OPEN 7 DAYS PER WEEK.

Please go to www.twglazingandwindowrepairs.com



Tom Fisher Tree Care

Fully qualified and insured specialists with over 20 years experience in all aspects of tree care, hedge trimming, stump grinding, garden reclamation and logs.



We work with modern, low impact machinery, using battery tools where we can to minimise noise disturbance.

To arrange a free quote, please scan the QR code, or head over to our website to fill out the contact form and we'll be in touch shortly.



07725 835715
www.fishertreecare.co.uk



Moundsmere **Estate Management**



Your local specialists in

FARM & ESTATE MANAGEMENT & RURAL PROPERTY LETTING & MANAGEMENT

From Country Houses to Weekend Cottages...

For a friendly free appraisal,

Contact:

**Moundsmere Estate Management, The Estate Office,
Moundsmere, Basingstoke, Hampshire, RG25 2HE.**

Telephone 01256 389253

Fax 01256 389508

E-mail info@moundsmere.co.uk

www.moundsmere.co.uk





International Payments

Sending funds abroad or repatriating funds to the UK?

If you're buying or selling an overseas property, paying overseas suppliers or have regular payments in a foreign currency, Misano Payments can likely save you money on the exchange rate compared to using your bank, whilst offering a personal service tailored to your requirements.

Contact us to find out more!

Toby Dyke

located in London & Hampshire

0203 488 6708

toby@misanopayments.com



LOCAL WILD VENISON AND DEER MANAGEMENT

Venison is a naturally healthy and lean meat, low in fat with a high content of omega oil, zinc, selenium, other minerals and vitamins

All our wild venison is sustainably harvested, then processed at our local registered food business, which is five-star rated for food hygiene

An exciting range of sausages, burgers, steaks, diced, mince and roasting joints, with special orders available. All with low food miles and free delivery.

Visit our website to find out more about us, our products, prices, recipes, customer reviews and testimonials

www.testvalleyvenison.co.uk

Email: paul@testvalleyvenison.co.uk or call us: **07741 778853**



buchannan
MARQUEES


marquees for all occasions




**Marquees • Furniture
Lighting
Dance Floor • Staging
Raised & Levelled Flooring Systems
Refrigerated & Freezer Trailers
Power Generators**



 **01794 388088**

 **enquiries@buchannan.co.uk**

 **www.buchannanmarquees.co.uk**

**Buchannan Marquees, Borne Farm, Furzedown Road,
Kings Somborne, Stockbridge SO20 6NL**



**SOUTHERN
TRACKWAY HIRE**

YOU'RE ON THE RIGHT TRACK

Safe and secure accessibility to your outdoor event. With our temporary track and roadways in place you can be sure your guests can access your event safely, easily and efficiently, without hindrance, damage to vehicles or any soft or vulnerable ground.

Affordable trackway, Durable ground mats, Installation by hand without the need for heavy vehicles, onsite consultation and planning at cost, Friendly flexible customer service, Delivery, installation and collection.



call us: **01794 338 488**

email us:

enquiries@southerntrackwayhire.co.uk

Borne Farm

Furzedown Road

Kings Somborne SO20 6NL

www.southerntrackwayhire.co.uk

Contemporary Catholic Co-educational 3-13 Day & Boarding

"Exceptionally well-adjusted and kind children"

Tatler Schools Guide



Flexible school bus service, covering Winchester & Stockbridge
Current pick-ups from Headbourne Worthy (SO23 7LD) & Stockbridge (SO20 6HE)

For further information, please contact the Registrar, **Sarah O'Rorke**
E: admissions@farleighschool.com T: 01264 712838 to book or to arrange a tour

HANDYMAN

Home and Garden
Maintenance and improvements

- Painting and decorating
- General repairs and improvements
- Fencing, Brickwork
- Shed roofs and repairs etc.

(Liability Insured)

Tel: **Chris Johnson 01794 399917**

mobile: **07716 666610**

Email: chris3johnson@ymail.com

To advertise here

Contact our advertising
manager, Sue Byram

01794 388521

subyram@aol.com

(The cost to cover the next
4 editions—February through May—
would be £24)

Promotional Video/DVD's Birthdays, Anniversaries

DVD Production

VHS tapes transferred to DVD

WEBSITE VIDEO PRODUCTION

- edited video clips to bring your
website alive

CALL MARTIN ON

For a Professional Service: **01794388668**

EMAIL: ONCUEVIDEO@GMAIL.COM



Ardent Kitchens

Honest, local, luxurious kitchens



New Lease Farm

King's Somborne

www.ardentkitchens.com

Tel: 07941 020133



TS Plumbing & Heating Services

- Plumbing & Heating
- Building Services
- Gas Safe Registered
- OFTEC Registered
- Oil Boiler & Tank Specialists

01794 368091 | 07801 661497

www.tsplumbingandheating.com

tsplumbingandheating@live.co.uk

Los Pinares, Sandy Lane, Romsey, SO51 0PD

